



## FOR STEAM BATHS IN A CLASS OF THEIR OWN

A high-end steam bath generator.  
Reliable, versatile and easy to operate.  
With integrated self-cleaning system.  
**Nordmann AT4D**



Humidification, Dehumidification  
and Evaporative Cooling

 **condair**



**High performance**

The Nordmann AT4D produces sterilized, hygienic, odour-free steam. With auto-sensitive temperature

control, innovative technology generating between 5 and 65 kg of steam per hour, and an extensive range of acces-

sories, it meets all the specifications required for the safe operation of a high-quality steam bath.

# NORDMANN **AT4D** by Condaire

## Electric steam humidifier with patented self-cleaning system



### Split unit

Another very useful advantage the AT4D features is its ability to split water compartment from electrical compartment for an easy installation in confined spaces.

This unique design makes the AT4D the choice when space is at a premium or for other individual applications.

### The water unit contains:

- Steam cylinder
- Filling system
- Replenishment system
- Inlet valve
- Drain pump
- Self-cleaning

### The control unit contains:

- Electronics
- Control panel
- Contactor
- Wire terminals

### Easy to install

The separate electronic compartment with its generous accessibility and the water and steam connections located outside the unit guarantee an easy installation.

### Intelligent water management

The water management automatically adjusts to local water conditions, keeping water consumption to a minimum.

### Applications

The steam bath generator AT4D is also suitable for Caldarium applications. Therefore a humidity control is standing next to an individually adjustable temperature control.

### The NORDMANN AT4D steam cylinder

The patented self-cleaning system prevents limescale produced during steam production from forming deposits on the electrodes and cylinder sides. It is simply removed using the drain pump. And for users that means maximum reliability and long service intervals.

### Easy to use

A three-inch graphic user interface provides easy access to important operating parameters such as temperature, lighting, cabin ventilation and fragrance injection.

### Remote control up to 1.2 km

In hotels, health clubs and spa complexes, you have simple control of the steam bath from reception or another remote site.

### Building technology

The AT4D can be integrated in existing building technology using the Modbus standard. If preferred, the steam generator may be networked via @Link to BACnet/IP and LonWorks.



External display in three versions

### AT4D Spa Display

The NORDMANN AT4D Spa Display is extremely user-friendly enabling you to control and program all the features and options. Lights, fragrance, temperature, timing of sessions is now at the end of a finger touch.

Two versions are available, surface- or flush-mounted, with only 19 mm total thickness and only 3mm over-surfacing when built-in.

The frame circling comes in three different versions to match the end-users taste: steel-brushed, black or white glass. The unique magnetic circling frame enables a fast changing of color and style making it interchangeable at all time.

Two choices of screen background color layout (Black or white) enable to match the finishing of your choice.

# Self Cleaning System

**The patented NORDMANN SC system** drastically reduces the formation of limescale in steam cylinders and automatically expels the minerals in suspension.

**The result: service intervals are much longer and reliable steam production is guaranteed.**

Thanks to the integrated self-cleaning (SC) system, service intervals with the NORDMANN AT4D steam humidifier are twice as long as those for conventional electrode-based humidifiers.

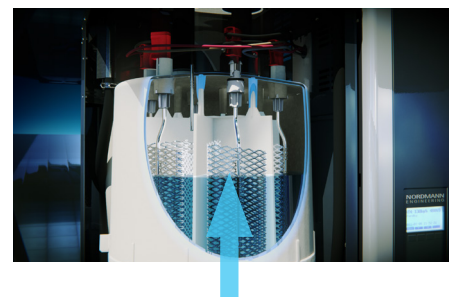
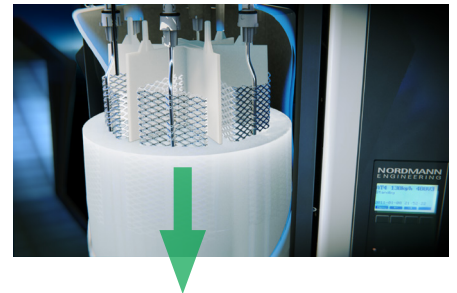
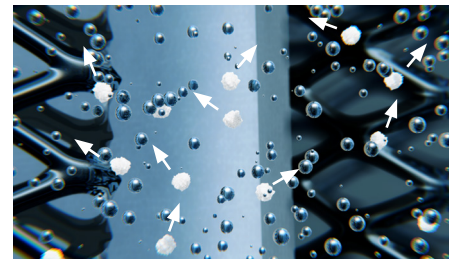
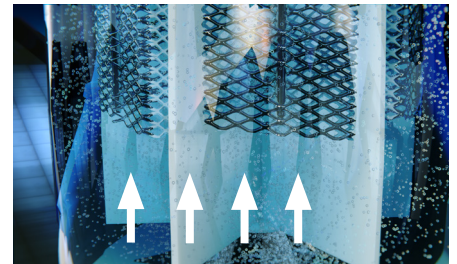
The SC system has an unusual, advanced feature that puts it in a class of its own. Air is blown cyclically into the steam cylinder causing the water to swirl. This keeps the particles of limescale in the entire steam cylinder constantly in motion and prevents them from settling on the sides of the cylinder.

The formation of limescale deposits on the heating electrodes and on the bottom and sides of the cylinder is prevented.

The fine particles of scale suspended in the water are rinsed out and removed during the automatic blowdown phase.

When the blowdown process is complete, the system is automatically refilled with fresh water and no interruption to operations.

The NORDMANN humidifier's SC system does not prevent the formation of limescale completely but it does make the interval between services significantly longer.



The formation of limescale in steam bath generators is a familiar problem that is inevitable when ordinary tap water is used. The longer the scale is left to form, the more it affects the efficiency and reliability of the heating electrode, steam cylinder walls and the water pipes.

## Standard model

- SC-System
- 5-line graphic display
- Multilingual, user-friendly menu structure
- Program, service and information level
- Adjustable de-scaling modes
- Real-time clock and timer programming
- Auto-sensitive temperature control
- Self diagnostic capabilities
- Remote operation and fault indication
- RS485 interface with Modbus protocol
- Mounting rails
- Terminals

## Options

- Split version
- Remote control panel up to eight units
- Steam bath nozzles
- Touch screen Panel
- Building Management System (BACnet IP/Lon Works)
- Temperature sensor
- Fragrance pump
- Silence
- Stage Light trafo
- CVI (control voltage integrated)

## Technical data

Nordmann AT4D		5	8	15	23	32	45	65
Heating voltage		max. steam output in kg/h						
400 VAC / 3Ph / 50..60Hz*	Type	534	834	1534	2364	3264	4564	6564
400 VAC / 2Ph / 50..60Hz	Type	524	824					
230 VAC / 3Ph / 50..60Hz	Type	532	832	1532	2362	3262		
230 VAC / 1Ph / 50..60Hz	Type	522	822					
Unit size		small	small	medium	medium	large	large	large
Dimensions (W xH x D)	mm	428x575x255	428x575x255	508x620x345	508x620x345	563x640x354	563x640x354	563x640x354
Operation weight	kg	17	17	29	29	65	65	67
Conformity		CE, VDE, GOST, EAC						
Control voltage		230 VAC / 1 Ph / 50..60Hz						

\* other heating voltages on request